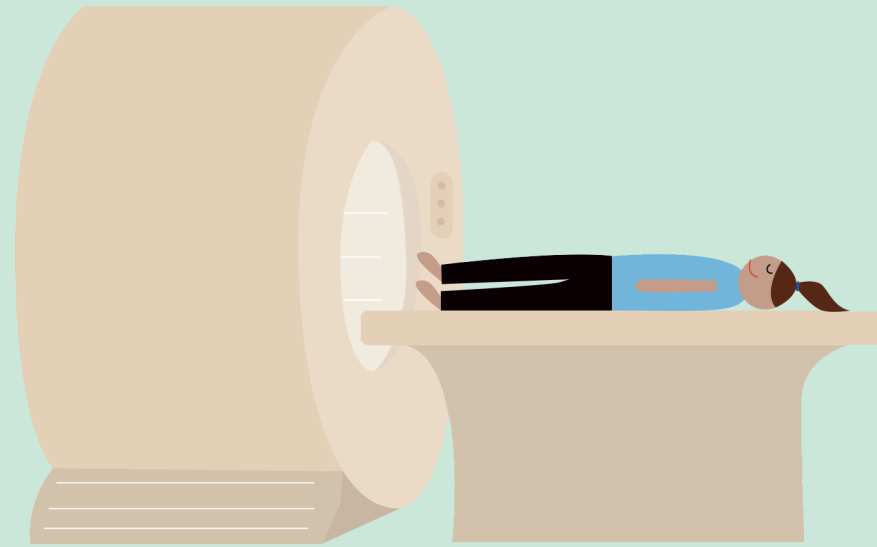


WELCOME TO THE MRI SCANNER

An MRI scanner is a large tube that contains powerful magnets. You lie inside the tube during the scan

During the scan you lie on a flat bed that is moved inside the scanner. Depending on the part of your body being scanned you will be moved into the scanner either head or feet first

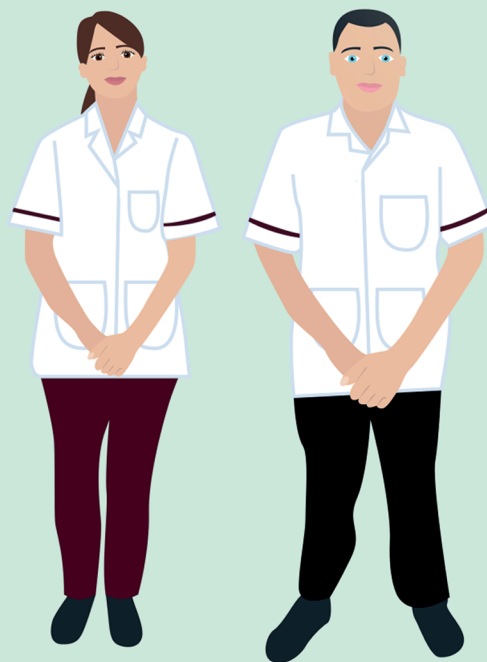


You may be able to talk to the Radiographer through an intercom and they will be able to see you

It is extremely important to keep still during your scan

At certain times the scanner will make loud knocking noises. You will be given earplugs or headphones, or both, to wear

Scan preparation



The MRI scanner is operated by a Radiographer or Assistant Practitioner

You may have been asked some safety questions prior to your appointment today



A final check will be carried out by a Radiographer before you go in for your scan. It is important to answer all of the questions honestly and to tell the Radiographer about all operations you have had during your life

Internal implants may be affected by an MRI scanner and the Radiographer will be able to check whether they are safe or not

You will be asked to remove some items of your clothing and jewellery, and may be asked to change into a gown or scrubs

No magnetic items are allowed in the scan room. This includes walking sticks, wheelchairs, walking frames and oxygen cylinders